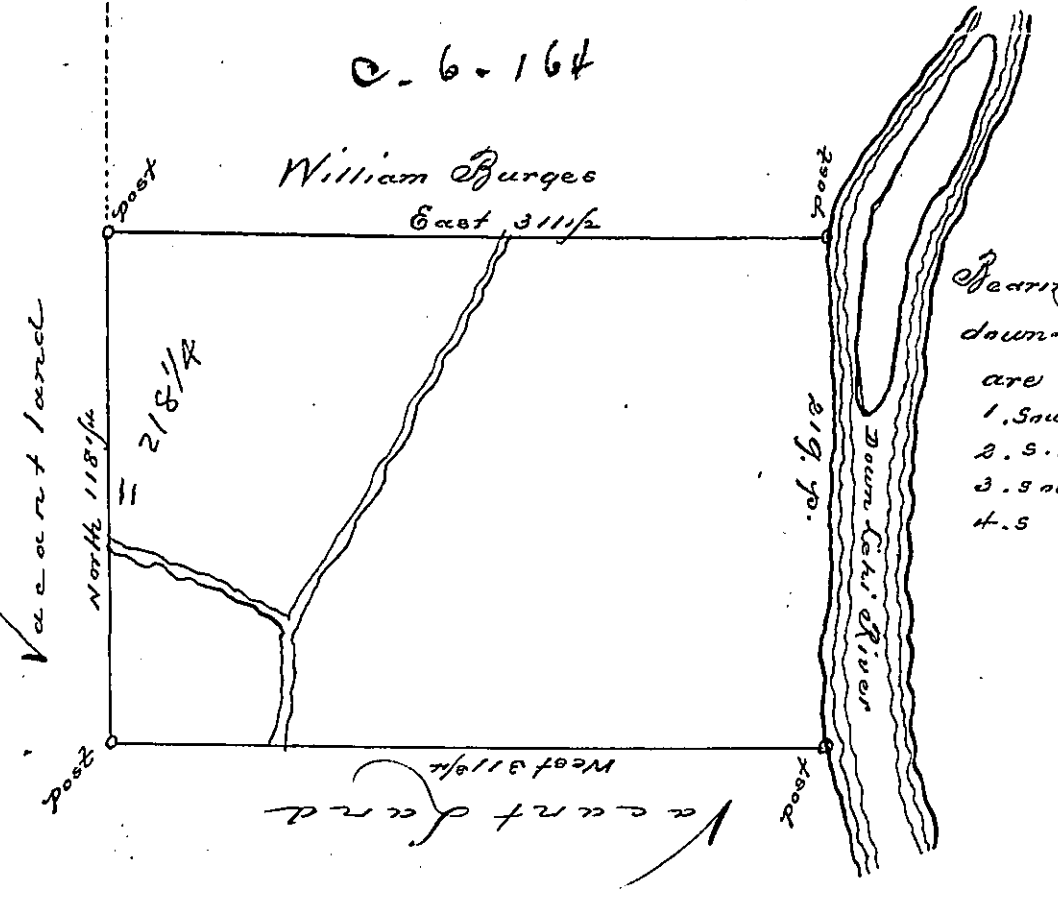


DEMISON - LUZERNE

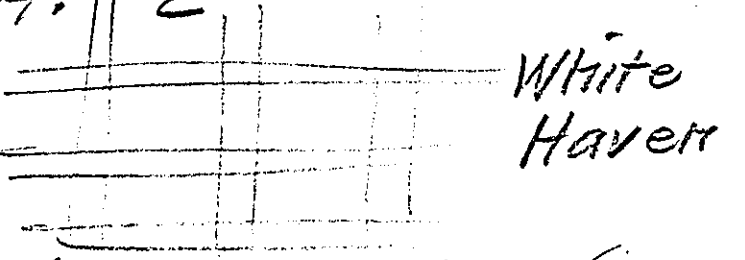
Z-136

E-569



Bearing and dist  
down Chi River  
are  
1. South 114 3  
2. S. 10 W. 22  
3. South 36  
4. S 13 E. 18  
219

A. 11 2



By virtue of a warrant dated the 11<sup>th</sup> September, 1784. Surveyed the 6<sup>th</sup> October 1788 to Robert Dorrock the above described tract of land situate on the West side of Chi River about five miles below the mouth of Bear Creek in Northampton County, containing three hundred and ninety nine Acres seventy six perches and the allowance of six p Cent &c.

p. Geo Palmer

Daniel Brodhead Esq  
Surveyor General.

IN TESTIMONY that the above is a copy of the original remaining on file in the Department of Internal Affairs of Pennsylvania, made conformably to an Act of Assembly approved the 16th day of February, 1833, I have hereunto set my Hand and caused the Seal of said Department to be affixed at Harrisburg, this

fourth day of February 1896.

James W. Latta  
Secretary of Internal Affairs.